

July 2018

President's Message:



There are no meetings this month.

Information needed

The Ceramic club of GV donated some molds to us. Some should work for clay, some will not. The new mold chairperson is asking you to try these molds and leave a note with your results, good or bad. They are located in the main room where it says "Mold Committee use only".

There are some holiday themed ones that you may like. If it is very detailed, try spraying with the oil spray before you pat your clay into the small areas. It should help it come out easier.



Here's the latest from your Glaze Committee:

Some new high fire glazes have been added - Moonscape (great for accents), Dark Blue Satin Matte, and a new Clear Satin Matte.

Additionally, we have an engobe (purple) approved for use in the studio. The sample tile may be found on the underglaze board, while the bottle is with the accent "special glazes", in between the Stroke & Coats and the Velvets. Engobes (colored slips) are able to be applied to greenware or bisque ware. This brand of engobe (Western) fires flat at low fire, or satin finish at our studios' high fire. Great for sgraffito or as a base for painting on.

Be sure to check out the glazes that have been formulated for dipping - you will find those in the 5-gal buckets under the counter.

The Garbage Glaze has been discontinued. If you have contaminated glaze, it must be discarded.

You should see a new section on the high fire glaze board called "Extreme Runners". We have had several incidents where these glazes have been incorrectly applied and have run onto kiln shelves. Rather than removing these glazes, the studio has instituted a new procedure, starting in July, that requires those wishing to use these glazes to have specific instruction in their use. Once you have received this training, just see the monitor if you wish to use one of these glazes.

Just a reminder that the test tiles in the glaze area are for the exclusive use of the Glaze Committee.

Lastly, a reminder that your glazed pieces must be completely dry before putting into the holding room for firing.

Thanks to Susan Anderson for this article.

Woven Basket Workshop

Marilynn Serra and Sue Peetoom will hold a workshop demonstrating how to make these interesting woven baskets one morning in late August. The information will be posted on the workshop board and there will be a signup sheet at the counter once a date has been determined.



The dark one is Redstone clay with sage matte on the top band. The light one is b-mix with grog with toshi brown woven strips and shino on the top band.



*We have some new members having a lot of
very creative fun!*



*Debbie Games made this folded vase
and used Spring Green inside and
Burnt Amber oxide with Sedona
Sunset outside.*

Very nice!



Suzzy McCafferty named this "The pot that almost killed me!"

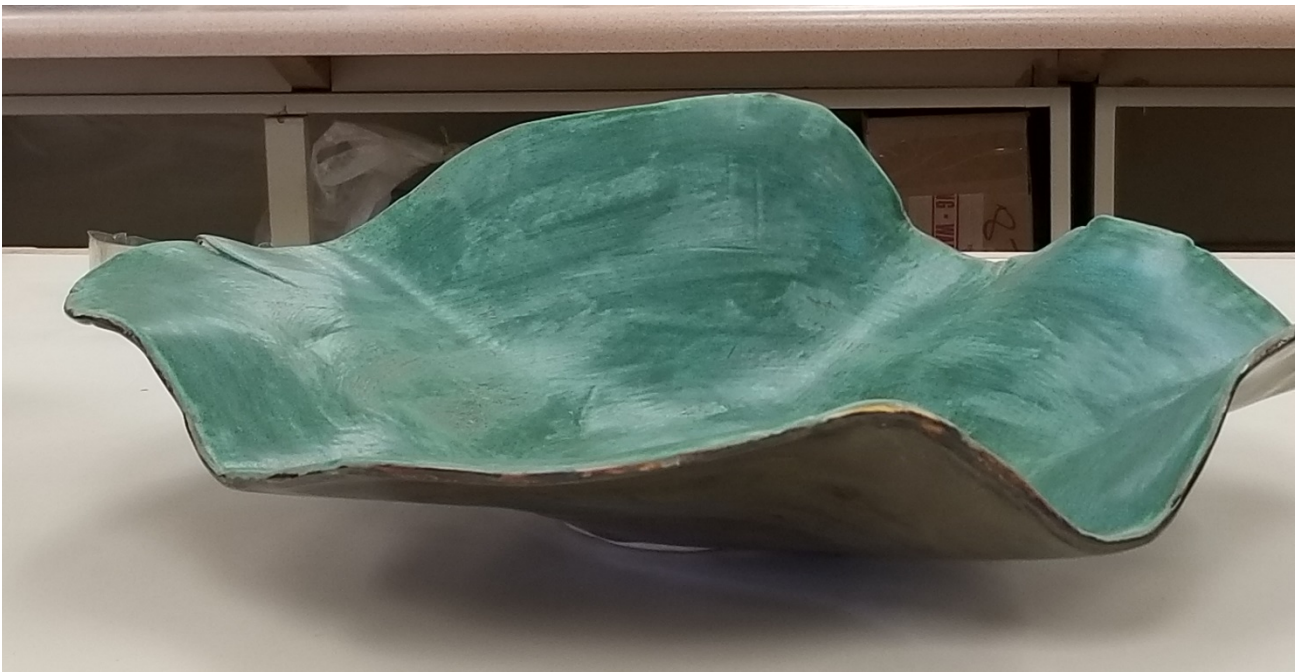
The doily is beautiful and she pressed LOTS of balls and nicely shaped pieces into the mold to create a great design!





Sharon Holliday slumped her clay over a mold and then used bean bags to support and create a nice shape. Inside is Copper Patina and out is Copper Jade.

Very clever!





Sally Richards is learning about glazing on her very first glaze job. She used Stroke & Coat, but after low-firing it was too thin, so she re-did it with the same colors and it turned out beautifully!



Rain makes Magic!



There will not be a newsletter for August; I will be on vacation in July. Ruth Clayton